

The Peterborough Post-16 Education Offer

A guide to further courses and pathways for learners with Special Educational Needs and Disabilities over 16 years old in Peterborough and surrounding areas.

Academic Year 2026-7

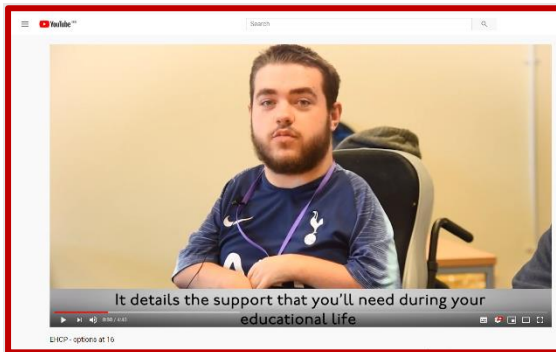


Part of the Post 16 Strategy in Peterborough.

Find out more on the SEND Information Hub at www.peterborough.gov.uk/localoffer

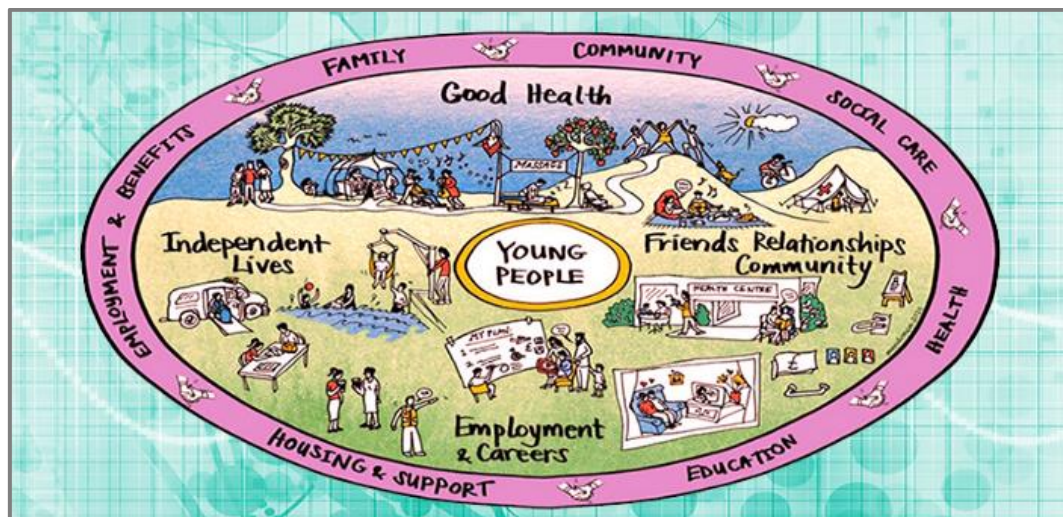
Introduction – now I am 16 or over

This guide is an overview of the various education and training options open to young adults who have special educational needs and disability when making a post 16 or post 19 transition. It is in addition to the published prospectuses for each college and is to identify more clearly, the variety of courses and options available for young people with high needs.



If you have an Education, Health and Care Plan (EHCP) the following [video](https://youtu.be/mrYloacGnLI) (<https://youtu.be/mrYloacGnLI>) may help you to understand how you can get involved with planning your future once you are 16.

If you do not have an EHCP but require support for your education in school or college (SEN (Special Educational Needs) Support/ALS (Additional Learning Support), you can get involved with planning your future using your 'one page profile;' and or your 'IEP (Individual Education Plan) this is held by the SENCO (Special Educational Needs Co Ordinator) at your school or college.



This picture is from an organisation called Preparing for Adulthood and helps identify the four key themes (in the large circle) that help young adults with SEND (Special Educational Needs and Disabilities) get ready for adult life and lists some of the people or services that can help (those in the purple outer circle).

Peterborough

Post 16 Education Offer

This guide covers several topics around education options for young adults over 16 years:

- How long do I have to be in education or training?
- What type of qualifications are there?
- What types of training are there?
- Where can I study in Peterborough?
- Courses available at Special Schools and Colleges
- Further information

How long do I have to be in education or training?

The law requires all young adults in England to continue in education or training until their 18th birthday. This can be through:

- Full time study in a school, college or with a training provider
- Full time work or volunteering combined with part time education or training leading to a relevant qualification.
- An apprenticeship/accessible apprenticeship
- A traineeship
- A supported internship

Every young adult between 16-17 years old is entitled to an offer of a suitable place of learning by the end of September, to continue in education or training the following year. The government places a duty on young adults aged 16-17 who do not have sufficient level 3 qualifications to continue in education or training until their 18th birthday.

Young adults with an Education, Health and Care (EHC) plan can continue to receive support from their plan until the end of the academic year in which they turn 25, provided they remain in relevant further education or training. That is, they do not have to pay for their courses at college providing they are making progress.

For more information, please see the government guide: Participation of young people in education, employment, or training -

<https://www.gov.uk/government/publications/participation-of-young-people-education-employment-and-training>

What types of qualifications are there?

There are lots of qualifications at many different levels, some specific to vocations or ways to work. The table below describes the national qualifications levels. The government has conducted a recent review and some of the changes are listed below. For example, the new T level qualification in which you will spend 80% of your time in the classroom and 20% on a minimum 9-week placement with an employer. This means you will learn what a real career is like while you continue your studies. [video of a young person studying a T level qualification](#)

National Qualification Level	National Curriculum (NC) Level	Qualifications
		There are 9 qualification levels
Entry Level	Each entry level qualification is available at three sub-levels - 1, 2 and 3. Entry level 3 is the most difficult.	<ul style="list-style-type: none"> • Foundation learning • Entry Level Award • Certificate • Diploma • Life skills
Level 1	National Curriculum	<ul style="list-style-type: none"> • first certificate • GCSE - grades 3, 2, 1 or grades D, E, F, G • level 1 award • level 1 certificate • level 1 diploma • level 1 ESOL (English for Speakers of Other Languages) • level 1 essential skills • level 1 functional skills • level 1 national vocational qualification (NVQ) • music grades 1, 2 and 3
Level 2	National Curriculum	<ul style="list-style-type: none"> • CSE (Certificate in Supported Employment) (Certificate in Supported Employment) - grade 1 • GCSE - grades 9, 8, 7, 6, 5, 4 or grades A*, A, B, C • intermediate apprenticeship • level 2 award • level 2 certificate • level 2 diploma • level 2 ESOL • level 2 essential skills • level 2 functional skills • level 2 national certificate • level 2 national diploma • level 2 NVQ • music grades 4 and 5 • O level - grade A, B or C
Level 3	National Curriculum Further Education	<ul style="list-style-type: none"> • A level • access to higher education diploma • advanced apprenticeship • applied general. • AS level • international Baccalaureate diploma • level 3 award • level 3 certificate

		<ul style="list-style-type: none"> • level 3 diploma • level 3 ESOL • level 3 national certificate • level 3 national diploma • level 3 NVQ • music grades 6, 7 and 8 • T Level • tech level
Level 4	Further Education	<ul style="list-style-type: none"> • certificate of higher education (Cert HE) • higher apprenticeship • higher national certificate (HNC) • level 4 award • level 4 certificate • level 4 diploma • level 4 NVQ
Level 5	Higher Education	<ul style="list-style-type: none"> • diploma of higher education (DipHE) • foundation degree • higher national diploma (HND) • level 5 award • level 5 certificate • level 5 diploma • level 5 NVQ
Level 6	Higher Education -Degree	<ul style="list-style-type: none"> • degree apprenticeship • degree with honours - for example bachelor of the arts (BA) honours, Bachelor of Science (BSc) honours • graduate certificate • graduate diploma • level 6 award • level 6 certificate • level 6 diploma • level 6 NVQ • ordinary degree without honours
Level 7	Higher Education (master's degree)	<ul style="list-style-type: none"> • integrated master's degree, for example Master of Engineering (MEng) • level 7 award • level 7 certificate • level 7 diploma • level 7 NVQ • master's degree, for example Master of Arts (MA), Master of Science (MSc) • postgraduate certificate • postgraduate certificate in education (PGCE) • postgraduate diploma
Level 8	Higher Education (PhD)	<ul style="list-style-type: none"> • doctorate, for example Doctor of Philosophy (PhD or DPhil) • level 8 award • level 8 certificate • level 8 diploma

What types of training are there?

In School / College	Mixture of School / College and Workplace
<p>Study programmes (16–19-year-olds or up to 25 with an EHCP)</p> <ul style="list-style-type: none"> • Helps working towards qualifications. • You can choose the qualifications and skills you work towards • Helps you develop your employability. • Course includes maths, English, citizenship and work experience. • Mostly college based with some work experience is possible 	<p><u>Apprenticeships / Accessible apprenticeships</u> if you have a learning difficulty (16+ years old)</p> <ul style="list-style-type: none"> • Gain qualifications and work experience • Usually, 4 days with employer and 1 day at college • Paid! (From April 2026, Minimum salary is £8 per hour for under 18-year-olds, age 18-20 is £10.85, Age 21+ is £12.71) although many employers pay more than this. • Available for all ability levels • Can last between 1 and 4 years
<p>Mainstream Courses (16+ years old)</p> <ul style="list-style-type: none"> • Mostly school / college based. • Mostly aimed towards qualification levels 2 or 3 • Mostly based with the majority in school / college. • SEND can be supported through high quality teaching and student support services in school/college. 	<p>Supported internships (16-24 years old with an EHCP)</p> <ul style="list-style-type: none"> • Structured study programmes focusing on functional skills and courses relevant to your placement. • Based mostly with employer. • Between 6 months – 1 year • Unpaid work placement for at least 6 months • Can lead to paid employment. • A Job coach supports learners in the workplace
<p>Bespoke courses</p> <ul style="list-style-type: none"> • These are limited courses. • For students who have complex needs that make it difficult for them to take part in college courses 	<p>Traineeships (16-24 year olds) <i>From 1 August 2023, 'Traineeships' will no longer be funded through the national traineeship programme, but can be offered by providers locally or can be integrated into 16-19 study programmes</i></p> <ul style="list-style-type: none"> • Work preparation training, often includes work experience, tuition in English & Maths • At least 6 months • Unpaid

Opportunities outside of work and school/college:

Volunteering (Any age)

- Unpaid
- A great way to develop skills, meet new people, and make a difference to other people.
- Opportunities available for all abilities, ages and levels of commitment in Peterborough.

Courses available in special schools and colleges

Please have a look at what is available on the next few pages. These courses are updated every year.

How long do courses last? How many days a week could I be studying?

- Most courses last at least one academic year (September-July) but may take longer depending on a student's needs.
- Special schools and sixth forms normally plan for 5 days of study/lessons. Schools offer a 5-day curriculum made up of components from the courses below and study periods.
- Colleges normally plan for 3-4 days of study/lessons but can support students to use the [remaining days of their week](#) for exploring the pathways into employment, healthy living, friendships and community and independent living.

How do I get on a course?

- If you are interested in a course look at the entry requirements below and then contact the school/college to discuss. Applications forms are online.
- Your school or college can help you with this.
Are you hoping to go to college in September? Over the last couple of years and because of COVID 19 our colleges have produced a guide to applications and open days and visits to help with your transition process. View the [Are you hoping to go to college in September \(Local Offer\) webpage](#) for more information. There are video tours of the colleges, dates for open days, application form links.
Please be aware that **admissions requirements for some of our post 16 special schools are under review**. Contact schools for further updates.
Please be aware that the course offers are subject to change.

The importance of planning transition to post 16

City College [SEN Support - City College Peterborough](#)

Peterborough and Stamford College (IEG) [School Liaison - Peterborough College](#)


The Peterborough Post 16 Education Offer: Courses for learners with SEND - Special Schools

Heltwate School (Olympic College)

-this is subject to change for Sept 26 due to the changing nature of the cohort coming through and will be revised later in the year -please contact the school for further information.

Website: www.heltwate.co.uk


Telephone: 01733 262878

Heltwate School (Olympic College)	Website: www.heltwate.co.uk Telephone: 01733 262878	
Courses for current year	Level	Potential progression
ASDAN: <ul style="list-style-type: none"> - Personal Progress Units - Work right 	Entry Level 1	<ul style="list-style-type: none"> • Vocational courses • Independence course
EQUALS: <ul style="list-style-type: none"> • Equals moving on Curriculum • Equals moving on Maths • Equals moving on English • Equals moving on ICT (Information and Communication Technology) 	Entry Level 1	<ul style="list-style-type: none"> • Vocational courses • Independence course
AQA Unit Awards	Pre-entry level 1	<ul style="list-style-type: none"> • Vocational courses • Independence course

Lime Academy Orton

Website www.limeacademyorton.org

Telephone: 01733 391800


Lime Academy Orton	Website www.limeacademyorton.org Telephone: 01733 391800	
<p>Lime Academy Orton Post 16 Empower Curriculum is designed to support learners as they move into adulthood, helping them build independence and confidence.</p> <p>Through a focus on communication, emotional well-being, everyday skills, and meaningful participation in the community, learners are supported to develop practical abilities that promote a fulfilling and more independent life.</p>		
Course	Level	Potential progression
Engage <ul style="list-style-type: none"> • Duke of Edinburgh 	<ul style="list-style-type: none"> • Bronze Award • Foundation Pathway 	College and Social Care provision
Empower <ul style="list-style-type: none"> • PfA (Preparation for Adulthood) outcomes • Bespoke work experience at our Lime Hub Café and Workshop. 	<ul style="list-style-type: none"> • Pre Entry 	College and Social Care provision
AQA Unit Awards	<ul style="list-style-type: none"> • Pre Entry 	College and Social Care provision

Courses for learners with SEND – Colleges

City College Peterborough

Telephone: 01733 761361

Website: www.citycollegepeterborough.ac.uk

<p style="text-align: center;">City College Peterborough</p>	<p>Website: www.citycollegepeterborough.ac.uk</p>		 <p>City College Peterborough</p>
Course	Level	Age	Potential progression
<p>Step Up (Accredited with NCFE)</p>	<p>Entry level 1 Entry level 2 Entry level 3 Level 1</p>	<p>16-19 years (14-25 with EHCP)</p>	<ul style="list-style-type: none"> • Occupational studies • Level 1 Pathway • Internship
<p>Skills for Independence (Accredited with NCFE.)</p>	<p>Pre-entry Entry level 1 Entry level 2 Entry level 3</p>	<p>16-19 years (14-25 with EHCP)</p>	<ul style="list-style-type: none"> • Step up • Occupational studies • Day Services (transition out of college)
<p>Occupational studies (Accredited with NCFE)</p>	<p>Entry level 1 Entry level 2 Entry level 3 Level 1</p>	<p>16-19 years (14-25 with EHCP)</p>	<ul style="list-style-type: none"> • Level 1 Pathway Internship • Supported Internship
<p>Vocational pathways (accredited) Pathways include:</p>			

City College Peterborough

Website:
www.citycollegepeterborough.ac.uk



Course	Level	Age	Potential progression
<ul style="list-style-type: none"> • Business and Enterprise (Level 1 and 2) • Childcare in caring for children (Level 1) • Introduction into caring for children (level 2) • Health and Social Care (level 1 and 2) • Hairdressing (Level 1) • Barbering and Hair dressing (Level 2) • Hospitality and Catering (Levels 1) • Culinary Skills (Level 1 and 2) • Motor vehicle (Entry Level & Level 1) • Skills for creative crafts (Level 1,2 & 3 portfolio) • Animal Care (Level 1 and Level 2) • ICT- <i>Information, Communication & Technology</i> (Entry and level 1) • Sports (Level 1 and Level 2) • Uniformed Services (Level 1) • Customer Service (Level 1) • Beauty Therapy (Level 1) • Construction (Level 1) 	Level 1 Level 2	16-19 years (14-25 with EHCP)	<ul style="list-style-type: none"> • Level 2 courses • Supported internship
SEA (Support Educate Autism)	N/A	16-19 years (14-25 with EHCP)	<ul style="list-style-type: none"> • Any study programme course
ICE (can be accredited if appropriate) Built with those in mind that may have been out of education for a while, have significant difficulties around education or have significant needs that need support reintegrating into a mainstream education provision.	N/A	16-19 years (14-25 with EHCP)	<ul style="list-style-type: none"> • Any study programme course

City College Peterborough

Website:
www.citycollegepeterborough.ac.uk




Course	Level	Age	Potential progression
Supported internship (Can be accredited if appropriate)	N/A	16-19 years (14-25 with EHCP)	<ul style="list-style-type: none"> • Employment • Accessible Apprenticeship • Apprenticeship
ESOL (English for Speakers of Other Languages)	Pre-entry Entry level 1 Entry level 2 Entry level 3	16-19 years (14-25 with EHCP)	<ul style="list-style-type: none"> • Level 1 & 2 Vocational Pathways • Supported Internship course


Peterborough College


-this is subject to change for Sept 26 -please contact the college for further information.

Website: www.peterborough.ac.uk

Telephone: 0345 8728722

<p>Peterborough College</p>	<p>Website: www.peterborough.ac.uk Telephone: 0345 8728722</p>		
Course	Level	Age	Potential progression
<p>T-Levels</p>	<p>Level 3</p>	<p>16-19 (25 with EHCP)</p>	<ul style="list-style-type: none"> • University • Employment • Apprenticeship
<p>Vocational Courses at Level 3</p>	<p>Level 3</p>	<p>16-19 (25 with EHCP)</p>	<ul style="list-style-type: none"> • University • Employment • Apprenticeship
<p>Vocational Courses at Level 2</p>	<p>Level 2</p>	<p>16-19 (25 with EHCP)</p>	<ul style="list-style-type: none"> • Level 2 • Level 3 • T Level • Transition to T Level • Apprenticeship • Supported Internship (with EHCP)
<p>Vocational Courses at Level 1</p> <ul style="list-style-type: none"> • Animal Care • Applied Science • Art and Design • Bricklaying 	<p>Level 1</p>	<p>16-19 (25 with EHCP)</p>	<ul style="list-style-type: none"> • Level 1 • Level 2 • Transition to T level • Apprenticeship • Supported Internship (with EHCP)

<p>Peterborough College</p>	<p>Website: www.peterborough.ac.uk Telephone: 0345 8728722</p>		
Course	Level	Age	Potential progression
<ul style="list-style-type: none"> • Carpentry and Joinery • Construction • Digital Media • Electrical Installations • Engineering • Hospitality and Catering • Hair and Beauty • IT • Introduction to Health, Social Care and Children and Young People Settings • Light Vehicle Maintenance • Performing Arts • Plumbing • Sport and Leisure • Travel and Tourism • Uniformed Services 			
<p>ESOL (English for Speakers of Other Languages)</p>	<p>Entry Level 1 Level 2</p>	<p>16-19 (25 with EHCP)</p>	<ul style="list-style-type: none"> • Further levels ESOL • Vocational courses
<p>Learner Engagement- 14-16 Year 10 Programme</p> <ul style="list-style-type: none"> • English Functional Skills • Maths • Gateway Qualification Progression 	<p>Level 1</p>	<p>Year 10</p>	<ul style="list-style-type: none"> • Year 11


<p>Peterborough College</p>	<p>Website: www.peterborough.ac.uk Telephone: 0345 8728722</p>		
Course	Level	Age	Potential progression
<p>Learner Engagement- 14-16 Year 11 Programme</p> <ul style="list-style-type: none"> English Functional Skills Maths Gateway Qualification Progression 	<p>Level 1</p>	<p>Year 11</p>	<ul style="list-style-type: none"> Level 1 Level 2 Transition to T level
<p>Pre-Vocational Studies Gateway certificate in Vocational Studies</p>	<p>Entry level 3 Level 1</p>	<p>16-19 (25 with EHCP)</p>	<ul style="list-style-type: none"> Level 1 Vocational Supported Internship (with EHCP) Employment
<p>Personal and Social Development (Gateway Qualification in Personal and Social Skills)</p>	<p>Entry level 3 Level 1</p>	<p>16-19 (25 with EHCP)</p>	<ul style="list-style-type: none"> Next Level on course Prevocational studies Level 1 vocational Supported Internship (with EHCP) Employment
<p>Employability Gateway qualification in Employability</p>	<p>Entry Level 3 Level 1</p>	<p>16-19 (25 with EHCP)</p>	<ul style="list-style-type: none"> Pre-Vocational Studies Level 1 Vocational Supported Internship (with EHCP) Employment
<p>Personal Progress (accredited with RARPA)</p>	<p>Pre-entry Entry level</p>	<p>16-19 (25 with EHCP)</p>	<ul style="list-style-type: none"> Personal and Social development Social care Employment
<p>Supported Internship (L1 Gateway Qualification in Digital Skills for Work or RARPA)</p>	<p>N/A</p>	<p>16-19 (25 with EHCP)</p>	<ul style="list-style-type: none"> Employment Apprenticeship


Stamford College


- this is subject to change for Sept 26 -please contact the college for further information.

Website: www.stamford.ac.uk

Telephone: 01780 484300

Stamford College	Website: www.stamford.ac.uk Telephone: 01780 484300		
Course	Level	Age	Potential progression
A levels	Level 3	16-19 (25 with EHCP)	<ul style="list-style-type: none"> • University • Employment • apprenticeship
T Levels	Level 3	16-19 (25 with EHCP)	<ul style="list-style-type: none"> • University • Employment • apprenticeship
Vocational Courses at Level 3	Level 3	16-19 (25 with EHCP)	<ul style="list-style-type: none"> • University • Employment • apprenticeship
Vocational Courses at Level 2	Level 2	16-19 (25 with EHCP)	<ul style="list-style-type: none"> • Level 2 • Level 3 • T Level • Transition to T Level • Apprenticeship

Stamford College	Website: www.stamford.ac.uk Telephone: 01780 484300		 Stamford College <small>Part of the Inspire Education Group</small>
Course	Level	Age	Potential progression
			<ul style="list-style-type: none"> Supported Internship (with EHCP)
Vocational Courses at Level 1 <ul style="list-style-type: none"> Art & Design Beauty Therapy Bricklaying Carpentry and Joinery Catering Electrical Installation Hairdressing Light Vehicle Maintenance and Repair Principles Plumbing Sport and Public Services Introduction to Health, Social Care and Children and Young People Settings 	Level 1	16-19 (25 with EHCP)	<ul style="list-style-type: none"> Level 1 Level 2 Employment Supported Internship (with EHCP) Apprenticeship
Exploring careers in Land Based Industries -Animal and Horticulture (Accredited with RARPA and Gateway Qualifications Entry Level 2 Certificate in Preparation for Employment)	Entry level 2 Entry level 3	16-19 (25 with EHCP)	<ul style="list-style-type: none"> Supported internship (with EHCP) Transition pathways to mainstream college Employment
Exploring careers in Service Industries- Catering and Retail (Accredited with RARPA and Gateway Qualifications Entry Level 2 Certificate in Preparation for Employment)	Entry level 2 Entry level 3	16-19 (25 with EHCP)	<ul style="list-style-type: none"> Supported internship (with EHCP)

Stamford College	Website: www.stamford.ac.uk Telephone: 01780 484300		 Stamford College <small>Part of the Inspire Education Group</small>
Course	Level	Age	Potential progression
			<ul style="list-style-type: none"> • Transition pathways to mainstream college • Employment
Independent Living (Life and Work) (Accredited with RARPA)	Entry level 1 Entry level 2	16-19 (25 with EHCP)	<ul style="list-style-type: none"> • Exploring careers courses • Transition to supported living
Independent Living Skills (Accredited with RARPA)	Entry level 1	16-19 (25 with EHCP)	<ul style="list-style-type: none"> • Exploring careers courses • Transition to supported living
Pathways (Accredited with Gateway qualifications Certificate in Progression Entry level 3)	Entry level 3	16-19 (25 with EHCP)	<ul style="list-style-type: none"> • Mainstream Courses in Vocational Area • Supported Internship • Employment
Supported Internship. (Gateway Qualification Entry level 3 Award in Preparation for Employment)	Entry Level 3 Level 1	18-25 with EHCP	<ul style="list-style-type: none"> • Employment • Apprenticeship
Bespoke timetables for learners with Vision, Hearing or dual impairments			

Further sources of information and guidance

Provider	Description	Contact information
Funding of students aged 16-25 with SEND	A guide with information on the way the Education and Skills Funding Agency (ESFA) and, in some cases, Local Authorities will calculate and allocate funding to institutions who provide education to young adults with SEND	Education and Skills Funding Agency updates
16-19 Bursary Fund	You could get a bursary via your college offer, to help with education-related costs if you are 16-19 years old and studying at school or college (not University) in England, on a training course. This will include unpaid apprenticeships if you receive Personal Independence Payment, or are in Care, are a Care leaver or receive Universal Credit. You can spend the money on things like clothing, books and other equipment for your course, transport and lunch on your study days.	0300 200 3300 www.gov.uk/1619-bursary-fund/overview
Disabled Student Allowance	Disabled Students' Allowance (DSA) is support to cover the study-related costs, for Higher Education students, you have because of a mental health problem, long-term illness or any other disability. This can be on its own or in addition to any student finance you get. The type of support and how much you get depends on your individual needs - not your household income. You do not need to pay back DSA.	https://www.gov.uk/disabled-students-allowance-dsa